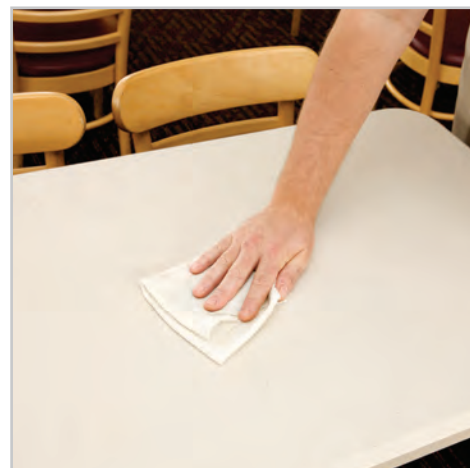
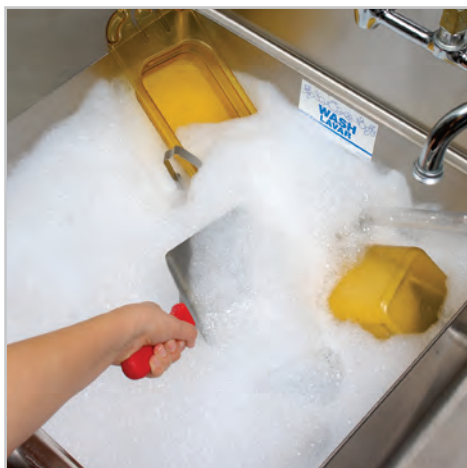




KAY® LiquidSense™ All Purpose Cleaner

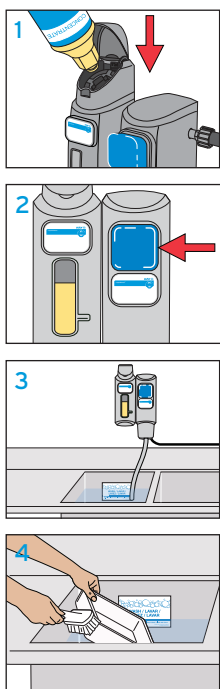
HIGHLY CONCENTRATED GENERAL PURPOSE CLEANER FOR BACK SINK AND SURFACE APPLICATION

- **Performance:** Highly concentrated All Purpose Cleaner with long-lasting suds and grease-cutting power to soften and remove soil.
- **Efficiency:** Highly effective multi-use product. Accurate dilution via LiquidSense™ Dispenser ensures consistent dosage at lowest in-use cost.
- **Safety:** Colour- and bottle shape-coded lockout via LiquidSense™ Dispenser helps prevent misuse and allows safe and PPE-free process.
- **Sustainability:** Positive impact on energy, transport, warehousing and overall handling. Minimising packaging waste and reducing reservoir refill time.



USE INSTRUCTIONS

Sink Fill



Spray Bottle Fill



Sink Application

Start with a clean sink

1. To fill LiquidSense™ reservoir with concentrate:
Remove bottle cap. Insert bottle into reservoir. Push hard to break the seal and empty entire contents.
2. Start filling the back sink by pushing the blue button, the button will 'click' when locked into open position.
3. Fill the back sink and pull up slightly on the button to stop the flow.
4. Immerse items to be washed and let soak for 5 minutes. Scrub with a pot brush until clean.

Surface Application

1. To fill LiquidSense™ reservoir with concentrate:
Remove bottle cap. Insert bottle in reservoir and push hard to break the seal and empty entire contents.
2. Peel off concentrate label to see solution label.
3. Use same bottle to fill with the ready-to-use product via LiquidSense™ dispenser.
4. Insert spray head.
5. Apply ready-to-use product on towel to clean dirty surfaces. Rub with a paper towel or cloth.

SPECIAL NOTES / INFORMATION

For professional use only!

Safety Data Sheet available for professional users on request.

SAFETY INFORMATION

Do not mix with any other products. For further information and safety instructions see product label and Safety Data Sheet.

FIRST AID

For precaution and first aid information, please refer directly to the respective Safety Data Sheet.

STORAGE CONDITIONS

Store between 0°C and 40°C in original packaging only.

PACK SIZE

6 x 1L